

Potting machine TM 2018



Operating instructions

Issue date: 01.10.2009 / V1.0

Before the initial start-up, read and keep at the machine for future use.



List of Contents

1 Product description

1. Intended use
2. Structure
3. Functional description
4. Technical Data
5. EU Declaration of conformity

2 General safety instructions

1. Due diligence of the operating company
2. Explanation of the safety symbols used
3. Basic safety precautions
4. Machine-related safety precautions
5. Demands on operating personnel

3 Transport, handling and storage of the machine

1. Transport
2. Handling
3. Storage

4 Installation

1. General notes
2. Installing the machine
3. Measures for the machine's stability against overturning
4. Disassembly and disposal of the machine

5 Initial start-up

1. Check prior to first start
2. Starting the machine for the first time
3. Stopping the machine

6 Operation

1. Normal operation
2. Shutting down the machine
3. Measures prior to and after a longer shutdown

7 Malfunctions

1. Behaviour in case of malfunctions
2. Possible malfunctions and trouble shooting

8 Maintenance

1. General notes
2. Inspection and preventive maintenance
 - 2.1 Elevator chains
 - 2.2 Rubber conveyor belt
3. Maintenance schedule

9 Part list

10 Circuit diagrams for electric and pneumatic system

11 Guarantee

1 Product description

1. Intended use

The MAYER TM 2018 potting machine may be used for planting and replanting plants into round or square containers or poly bags with a minimum of working force and of time.

Other means of use of the machine, besides the ones listed here, are not permitted – and they are not the usage for intended purpose.

If the MAYER TM 2018 potting machine is not used in accordance with the regulations, the safe operation of the machine is not guaranteed.

The usage for intended purpose involves the reading of the operating instructions, and the compliance of the regulations, specially safety regulations stated in it. Furthermore, every inspection and maintenance should be performed in specified time.

For damages that are originated from the usage for not the intended purpose, neither the manufacturer, nor the operator of the MAYER TM 2018 potting machine takes responsibility.



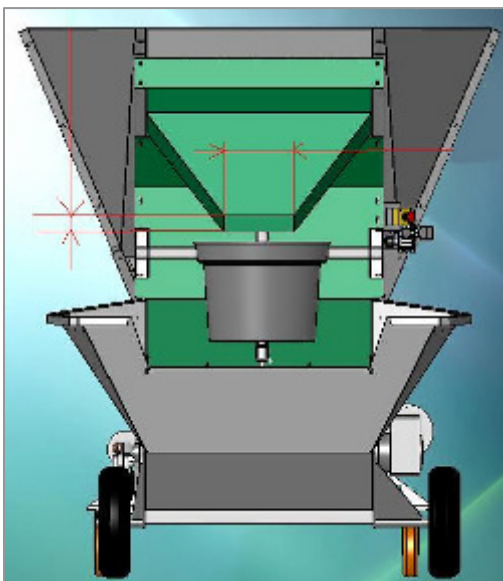
2. Structure



Standard equipment (basic machine)



Version with vibrating grid (optional)



Soil chute for 1 workplace



Soil chute for 2 workplaces
Different pot sizes can be filled

3. Functional description

The empty containers are put onto the pot supports by one person (in case of version with optional vibrator they are put onto the grid).

Plates are fixed on endless chains located in elevator housing which take the soil from the soil hopper. When the plates reach the upper turning point the soil falls into container being there by means of the soil chute.

A controlled conveyor belt is installed into the soil hopper which forwards the soil always towards the elevator.

One or several person(s) standing in front of the machine may plant plants into the containers. Plant holding trays may be located beside the machine.

The filled containers are manually taken away from the machine and new empty containers are manually put onto the pot supports.

<p>Warning! Special care shall be taken on section 2 „General safety instructions”.</p>

4. Technical data

Make:	Mayer
Machine type:	Potting machine
Series:	2018
Length / width / height:	300 x 130 x 200 cm
Weight:	480 kg
Working height:	approx. 85 cm
Current consumption:	16 A
Control voltage:	24 V DC
Power connection:	400V/50Hz, 5-pole
Power input:	3,2 kW
Pot size:	containers 25 l and larger
Capacity of soil hopper:	1,5 m ³ 2,5/3,5/4 m ³ on request
Production speed:	depending on container size
Workplace related emission value:	73dB (A)

Available accessories (for an additional charge)

- Soil hopper extension 2,5 m³
- Soil hopper extension 3,5 m³
- Soil hopper extension 4 m³
- Heavy duty wheels in connection with soil hopper extension
- Conveyor belts
- Roller conveyors and roller curves
- Towing bar
- Stainless steel elevator shovels
- Stainless steel chains
- Special tyres (used for cars)
- Vibrating unit

Important note!

When placing repeat orders for accessories and spare parts, make sure to have information about the machine type and number at your hand!

3. EU declaration of conformity

According to Appendix IIA of the EU Machinery Directive (2006/42/EC)

The manufacturer: **Mayer GmbH & Co. KG
Maschinenbau u. Verwaltung
Poststrasse 30
89522 Heidenheim | Germany**

hereby attests that the machine described in the following: **Make: Mayer
Model: Potting machine
Series: 2018
Year constructed: From 2008**

fulfils the safety and health requirements of the following EU Machinery Directive: **2006/42/EC**

Harmonised standards applied:

	Safety of machinery, basic terminology, general guiding principles for organisation
Part 1 EN ISO 12100-1	Part 1: Basic terminology, methodology
Part 2 EN ISO 12100-2	Part 2: Guiding technical principles and specifications
EN ISO 13857	Safety distances to keep the upper limbs from reaching danger points
ISO 13854	Safety of machines, minimum distances to avoid any crushing of body parts
EN ISO 13849-1	Safety-related parts of control systems Part 1: General principles for design
EN ISO 14121	Principles for risk assessment
ISO 14119	Interlocking devices associated with guards
ISO 13850	EMERGENCY SHUT-OFF systems
IEC 60204-1	Electrical equipping of industrial machines Part 1: General requirements

Any design alterations that effect the technical specifications given in the Operating Instructions or the intended use, i.e. change the machine substantially, will invalidate this EU Declaration of Conformity.

Heidenheim, 01 October 2009


Dipl.-Ing. (TU)¹ Arpad G. Meszaros
Head of Development and Design

¹ Graduate engineer (from a technical university)

2 General safety instructions

1. Due diligence of the operating company

The MAYER TM 2018 potting machine was designed and built taking a danger analysis into consideration and after careful selection of the harmonised standards to be complied with as well as other specifications. It therefore meets the state of the art and guarantees a maximum degree of safety.

However, only if all the measures required for such are taken can this safety be achieved in actual operational practice. Planning these measures and checking their implementation is subject to the operating organisation's duty to take due care.

The operating organisation must in particular guarantee that:

- ... the machine is only used in accordance with its intended use (cf. the Product description section).
- ... the machine is only operated when in flawless working order and, especially, that the working order of the safety equipment is regularly checked.
- ... the Operating Instructions are always available in legible condition and complete at the location where the machine is used.
- ... only sufficiently qualified and authorised personnel operate, service and repair the machine.
- ... these personnel are regularly instructed about all relevant matters concerning industrial safety and environmental protection and that they know the Operating Instructions and especially the safety instructions they contain.
- ... none of the safety and warning signs attached to the machine are removed and that all remain legible.
- Users must obligate themselves only to ever operate the machine when it is flawless condition.
- No unauthorised conversions or alterations are allowed that influence the machine's safety.
- Only when it has stopped, must any work ever be carried out on the machine.



- Before beginning with any work on the machine, secure its drives and accessory parts against being switched on unintentionally.
- The protective devices may only be removed when the machine has been stopped.
- Local safety and accident-prevention regulations always apply to any operation of the machine.
- The machine may not be started if any safety devices are removed.
- In the working area the operator is responsible for other people.
- **In case of non-compliance with any one of the points cited above, the manufacturer shall be released from all liability.**

1. Explanation of the safety symbols used

The safety symbols along with the text of the safety instructions are meant to point out unavoidable residual dangers that exist when dealing with this machine. These residual hazards relate to:

- People
- The machine
- Other things and objects
- The environment

The following safety symbols are used in these Operating Instructions:

This symbol indicates that there are dangers to the machine, things and the environment, but that no dangers to people are to be expected.

If these instructions are not followed, it might result in malfunctions and damage to the machine. Property damage and environmental damage might also come about



This symbol identifies instructions contributing to better understanding of the machine information that helps you to use the machine in optimum fashion. This symbol does not identify safety instructions.



This symbol warns against the danger of electric shock.



Be sure to also note that a safety symbol can never replace the text of safety instructions—the text of safety instructions must therefore always be read completely!

3. Basic safety precautions

Always be sure that:

- ... tight-fitting working clothes are worn at all the workplaces.
- ... it is not allowed to wear chains, rings, bracelets or wristbands.
- ... for operationally relevant reasons, it is not possible to completely cover the compost hopper.
- ... it is not allowed to reach into the compost hopper (to push in more soil, for example), because when doing so there would be a danger of getting caught by the scraping chain.
- ... it is not allowed to get into the compost hopper while the machine is running.

4. Machine-related safety precautions

The workplaces are spread over various areas of the potting machine.

a) Filling the soil hopper with substrate from the rear or from the right or left side.

b) Putting containers onto the pot supports, filling containers with soil and potting plants on the front side of the machine.

Responsibilities for the various activities must be clearly defined and complied with.

Unclear competencies represent a safety risk.

In case of malfunctions during the work flow it is forbidden to touch the running machine in order to resolve the malfunction.

It must always be possible to access the emergency cut-off switch.

The emergency cut-off switch should always be located on the relevant workplace (during normal operation preferably on the panel, next to the right of the worker).

It is forbidden to climb onto the running machine.

The machine must be set up on even and solid surface so that it stands securely in place.

There is danger of life in case of a machine falling over.

The floor (workplaces at the machine and traffic routes) must be regularly cleaned from dirt and water in order to avoid danger of slipping.

Stumbling blocks in the form of cables connected to the energy supply systems must be avoided

All feed lines to the machine must be protected against damage.

Only a skilled electrician is allowed to carry out works on the electrical equipment.

Protection devices

- are fitted for the safety of operating personnel
- must in no case be changed, removed or evaded by modifications to the machine.

5. Demands on operating personnel

The machine may only be operated by personnel who have been trained for such, shown what is involved and are authorised to do so. These individuals have to know and act in accordance with the Operating Instructions. The respective authorisations for the operation personnel must be clearly prescribed.

In addition to this, special qualifications are required for the following activities:

Operation personnel being trained may at first only work with the machine under the supervision of an experienced individual. It should be confirmed in writing that the training has been successfully completed.

Only trained personnel may ever operate any of the control and safety equipment.

All individuals that carry out any activities with the machine have to read the Operating Instructions and confirm by their signature that they have understood the Operating Instructions.

3 Transport

To prevent damage to the machine as well as injuries while transporting the machine, it is absolutely necessary to comply with the following points:

- The transport work may only be carried out by individuals qualified to do so, complying with the safety instructions.
- The machine may only be lifted by the supporting points provided for such.
- Only the load-lifting devices and tackle specified here may be used to transport the machine.
- Be sure to also read the "General Safety Instructions" section.

When transporting the machine, the following special dangers must be expected:

- Suspended loads can drop, which would be a lethal danger – never go under suspended loads!
- If load-lifting equipment other than that specified here, severe damage to the machine may result.

1. Transport

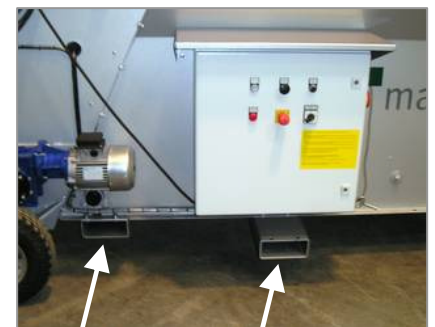
When the machine is transported special care shall be taken to avoid damage of the machine during loading or unloading.

During transport fixings according to type of transport shall be implemented.

Moisture condensation caused by temperature difference during transport as well as shocks during transport shall be avoided.

The machine shall be operated with usual care.

It is recommended to use a relevant attachment when loading or unloading the machine by means of a forklift



2. Handling

The potting machine is fitted with 2 pneumatic tyres on one axle on the front and 2 castors on the soil hopper. The weight of the empty machine is balanced on the axle. The machine can be pushed and pulled. On request, a trailer coupling can also be attached for an extra charge.

If the machine is to be moved over an inclined plane, it is necessary:

- to completely empty the soil hopper,
- to make sufficient safety precautions in order to prevent the machine from accidentally rolling away.

Such precautions may include:

- enough personnel
- to secure the wheels using a wedge
- and so on

3. Storage

When the machine or its parts are not reassembled right after transport, then they shall be carefully stored on a protected area. It shall regularly be covered and protected against dust and moisture.

Tasks for putting out of operation are detailed in section 6.3.



4 Installation

1. General notes

a)

To protect the machine against weather caused damages it is suggested to use and store it inside.

b)

Electrical connection: 400V/50Hz.

Connection is permitted only to socket-outlets which are protected by an AC/DC sensitive RCCB (residual-current circuit-breaker) 0,03A.

c)

Be sure that enough space is assured for feeding and filling pots. Same care shall be taken in case of machines connected in front of or behind it.

d)

In order to capacity of the machine to be used efficiently it is suggested the soil mixture, seedling, plants and pots to be prepared on the best place and in sufficient quantity.

2. Installing the machine

a)

A hard soil surface shall be provided under the machine to prevent the wheels and castors from sinking into the soil.



b)

The castors are equipped with a handbrake.

3. Measures for the machine's stability against overturning

There is no need to carry out other activity for erecting the machine than it is described in section 4.2.

4. Disassembly and disposal of the machine

After completion of its full time of operation, the machine must be duly separated from energy supply systems and disposed of according to valid legal regulations.

5 Initial start-up

It is absolutely necessary to comply with the following safety instructions for the initial start-up of the machine. This will prevent injury to individuals, damage to machinery and other property damage.

- The initial start-up may only be carried out by qualified individuals, complying with the safety instructions.
- Before the first start-up, check whether all the tools and parts not belonging in it have been removed from the machine.
- Before the first start-up, check the electrical connections.
- Activate all the safety equipment and EMERGENCY SHUT-OFF switches before the initial start-up.
- Also read the section "General Safety Instructions".

1. Check prior to first start

Prior to starting up the machine, the following must be checked:

- are all safety devices available?
- was the machine damaged during transport?
- all visible bolted joints must be checked for tight seat.
- Prior to putting the machine into operation, the machine's connecting cable and the cable of the emergency cut-off switch must be checked for damages.



1. Starting the machine for the first time

After reassembly the machine shall be checked as per the following:

a)

Be sure not foreign materials, such as tools or similar, are left in the soil hopper, in the elevator or under the pot supports.

b)

Put main switch of the machine to OFF („Null”) position before plug of the connection cable would be connected to the socket.

c)

When the machine is connected, push the button “Start”.

d)

Care shall be taken on the following:

With the switch, “Soil” means:

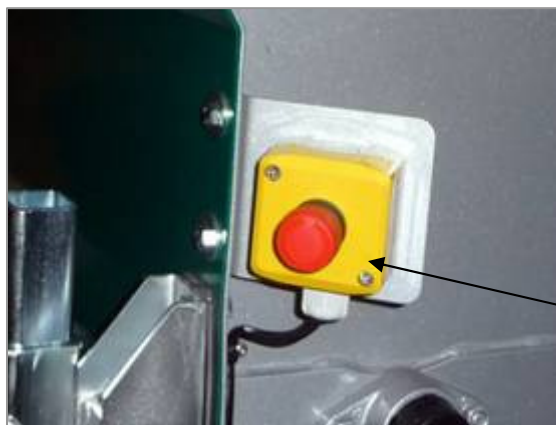
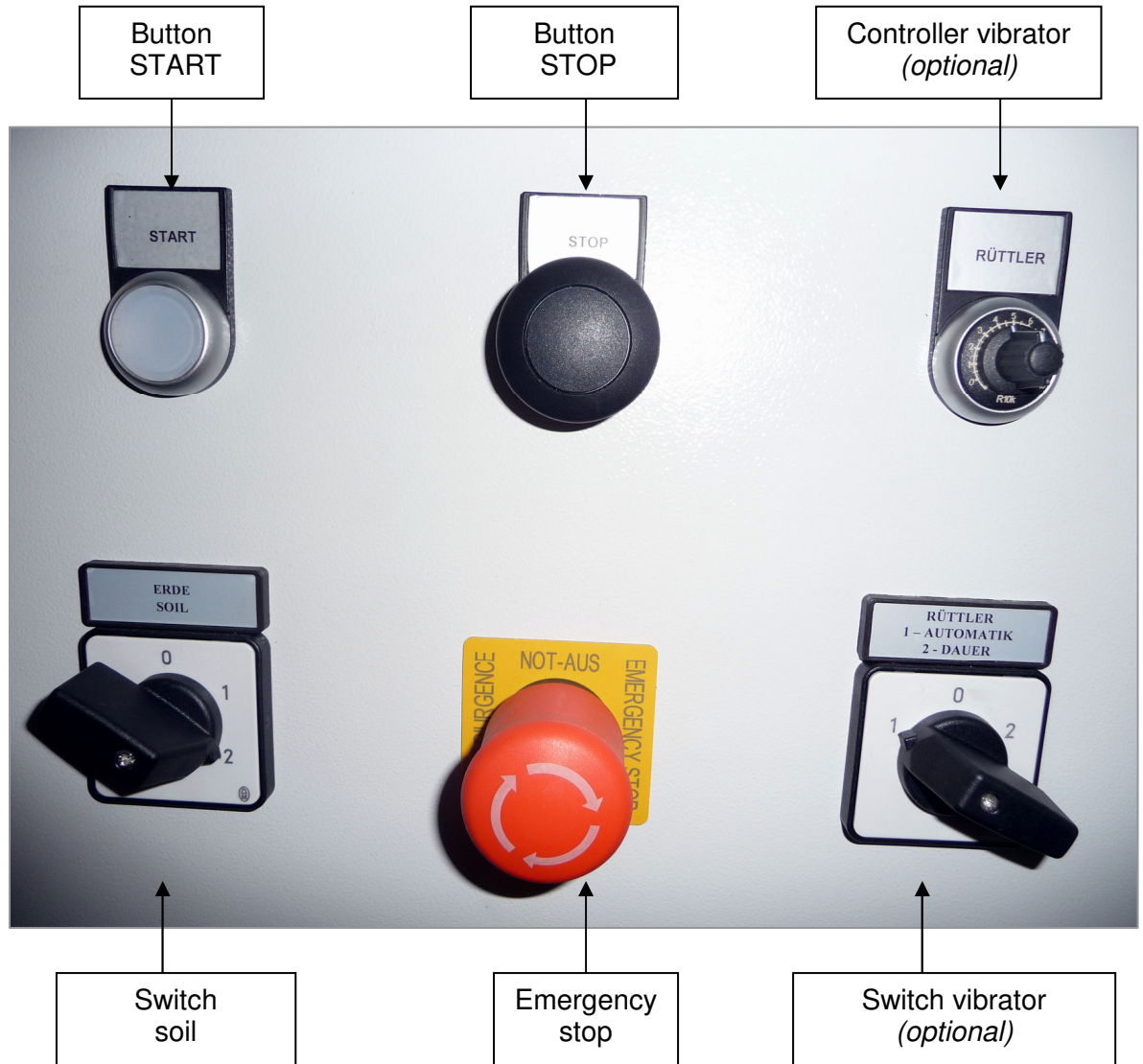
- Position “1”:
> smaller amount of soil and less speed
- Position “2”:
> larger amount of soil and more speed

Warning!

- Switch position to right: elevator and conveyor belt are moved in normal operational direction.
- Switch position to left: conveyor belt is moved in normal operational direction while elevator is moved in opposite direction.

e)

In case of there were no problems found or unusual noises heard during test operation, the machine may be put into operation as it is described in section „Operation”.



Emergency stop

3. Stopping the machine

There are two ways provided to switch off the machine.

a)

In normal case the machine is being controlled by means of the pedal switches. The machine will stop automatically as soon as the pedal switch is being released.

b)

In emergency case by „Emergency Stop” switch

Note:

See also section "6.2 – Shutting down the machine"

6 Operation

1. Normal operation

a) Before starting operation the following shall be checked:

- Are pots, plants and soil mixture available in sufficient quantity?

Care about the following

- Soil transport
- Container preparation
- Use the shortest transport routes

b) Adjusting or shifting the pot supports

The position of the two supports for the containers can be adjusted both horizontally and vertically in order to match the container size.



c) Soil feeding of the machine

The soil hopper contains 1,500 litres and can be fed in various ways without the work flow at the machine being disturbed or interrupted.

Feeding can take place:

- manually by means of a shovel
- using a wheelbarrow
- using a conveyor belt
- using a shovel loader

d)

The two pedal switches are placed left and right in front of the machine.

After switching-on the main circuit breaker, the machine starts when the pedal switches are being pressed and fills the containers with soil. The soil keeps on running as long as the pedal switches are being pressed.



e) Adjusting soil amount

Supply of soil from the soil hopper to the elevator takes place by means of a continuous rubber conveyor belt, running on carrier rollers in the soil hopper.

There are 3 options to control the soil amount to be fed:

I.

By setting different switch positions on the elevator and rubber conveyor belt:

- to the right on position "1" > small amount of soil
- to the right on position "2" > large amount of soil



Caution!

Right switch setting means: Elevator and conveyor belt run into work flow direction.

Left switch setting means: Elevator runs against work flow direction and conveyor belt runs into work flow direction.

II.

Speed of the belt may be increased or decreased by rotating the star wheel as it is marked.

Before setting is started, clamping lever of spindle of the star wheel shall be loosened and when the required speed is set it shall be tightened. Thus the continuously moved elevator plates carry larger or smaller quantity of soil.

When quantity of soil is set, always make setting by only one or two rotations and then wait until 40-50 pots are filled. Then correction may be made if it is necessary.



III.

Number of elevator plates may be doubled on charge of extra costs.

Note:

Care shall be taken to set right the required soil quantity.
Thus you save the elevator and it results in longer lifetime.

f) Setting compactness of the soil in the containers
(optionally with special equipment vibrating grid)

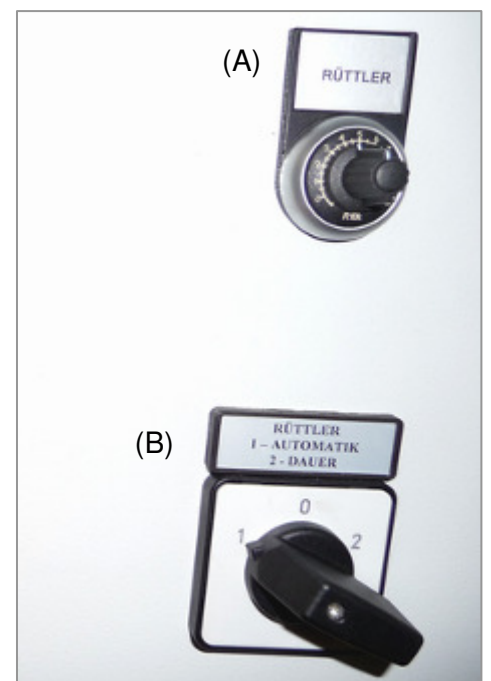
Special feature of the MAYER potting machine TM 2018 with vibrating unit *(optionally)* is the possibility to set compactness of the soil in the containers. This depends on the strength of the vibrator.

Less vibration strength -> looser filling in the containers
More vibration strength -> compacter filling in the containers

By means of the controller „Rüttler“ (vibrator) (A) the strength of the vibrator is being adjusted.

Switch (B):

- switch position „1“ - continuance:
 - when the pedal switches are being pressed, the soil supply and vibrator are running
 - when the pedal switches are being released, soil supply and vibrator will stop
- switch position „2“ – permanence:
 - soil supply and vibrator are running continuously
 - use the start-stop switch on the switch box to start and stop the machine



2. Shutting down the machine

There are two ways provided to switch off the machine.

a)

In normal case the machine is being controlled by means of the pedal switches. The machine will keep on running as long as the pedal switch is being pressed.

b)

In emergency case the machine can be stopped by the „**emergency stop**” switch.

When the push button „emergency stop” is pressed the machine stops immediately and remains stopped. After the „emergency stop” is eliminated, the machine may be started by pressing the “start” switch on the switch box.

3. Measures prior to and after a longer shutdown

a) Before a long shutdown

- Clean carefully the machine.
- Grease and oil certain parts of the machine according to maintenance plan.
- Protect against dirt and moisture (to be covered)
- Disconnect the machine from power lines (electricity, compressed air)

b) After a long shutdown

- Grease and oil certain parts of the machine according to maintenance plan.
- Visually check the machine.
- Connect the machine to required energy sources.
- Start the machine as it is described in section „Initial start-up”.

7 Malfunctions

To prevent damage to the machine as well as injuries while remedying malfunctions at the machine, it is absolutely necessary to comply with the following points:

- Only eliminate a malfunction if you have the qualification specified to do so.
- Also read the section "General Safety Instructions".
- When eliminating malfunctions with the machine, the following special dangers have to be expected:
- Accidentally switching on the power sources can result in injuries to people as well as damage to the machine.
- In case of unprotected manual operation, there is an increased risk of injuries through bruising

1. Behaviour in case of malfunctions

If any malfunctions should occur while the machine is in operation, proceed as follows:

1. Stop the machine either using the pedal switches, the STOP button, or EMERGENCY SHUT-OFF, depending on the situation.
2. When necessary for the safety of people or of the machine, immediately cut off the machine from the power system it has.
3. Troubleshooting > If necessary, then by qualified personnel
4. Error correction > If necessary, then by qualified personnel
5. Starting up the machine

2. Possible malfunctions and trouble shooting

a) Mechanical malfunctions

Failure/Malfunction	Cause	Trouble shooting
Noise in the elevator	Jammed stone or wooden piece	Remove cause for malfunction. Possibly by running elevator backwards (turn switch left to position "1" or "2")
Erratic filling of containers	Matter in elevator	Remove source of interference.
	Soiled buckets	Clean buckets.
No soil supply	Soil hopper empty	Fill hopper.
	Broken return spring at switch neutral gear	Replace spring.
	Free wheel hub is defective	Replace free wheel hub

b) Electrical malfunctions

Failure/Malfunction	Cause	Trouble shooting
Motor protection switches off	Fault in electronics	Electronic parts shall be checked by a skilled electrician
	Mechanic overload	Remove the foreign material causing overload

8 Maintenance

When carrying out maintenance for the machine, it is absolutely necessary to comply with the following safety instructions. Doing so will prevent injuries to people, damage to the machine and other damage to property as well as the environment.

- **Cleaning, lubricating and maintenance work may only be carried out by authorised operating personnel. The Operating Instructions must be complied with exactly.**
- Only trained electricians may ever carry out any of the work on the machine's electrical equipment.
- Switch off all sources of voltage and secure the sources of voltage against them being accidentally switched back on.
- Release pressure of every unit that is under pressure.
- Only Mayer GmbH & Co. KG may ever manipulate the machine's control programme.
- All un-recycled operational materials, lubricants and supplies must be disposed of in an environmentally friendly manner.
- Also read the section "General Safety Instructions"

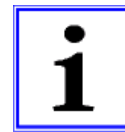
When carrying out maintenance on the machine, the following special dangers have to be expected.

- Installing incorrect spare parts or wearing parts can cause severe damage to the machine.
- Accidentally switching on the power source can result in severe bodily injuries and damage to the machine.
- There is a danger of getting injured on sharp-edged machine parts/tools that are exposed.
- Lubricants or fertilisers that have escaped can result in caustic burns on direct contact with the skin.
- When unsecured manual operation is carried out, there is an increased risk of injury through crushing.

1. General notes

We recommend an annual inspection of the entire machine by our customer service.

For service or repair work, order our customer service at one of our service workshops.



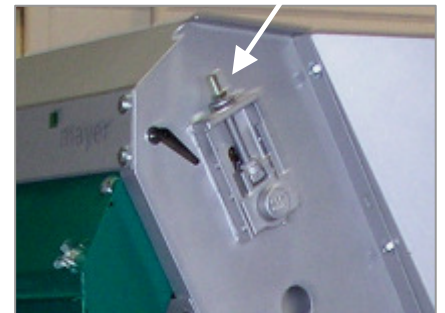
Spare parts have to meet the technical requirements of the machine's manufacturer. This is guaranteed with original spare parts from MAYER.

2. Inspection and preventative maintenance

2.1 Elevator chains

Chains may be retensioned by means of tensioning bearings located on two sides of the elevator. Check regularly if the chains are tensioned properly. When the chain is too loose the plates may jam with edge of the housing.

Overtensioned chain requires an excess of driving power and causes too quick wear. When the chains are retensioned both of them shall have the same tightness. With the soil hopper being completely empty and the elevator being at the height of the pot holder, normal tension is available when the chain can be moved about 3-4 cm by hand.



Grease elevator chain prior to a longer shutdown!



2.2 Rubber conveyor belt

Generally the rubber belt requires no retensioning.



However if the belt should be readjusted caused for example by remedy works carried out on the machine, follow the process described below:



Tensioning of the belt may be adjusted by means of tensioning nuts located at end of soil hopper. It is important that both sides of the belt are tensioned by the same force.

Beyond the above care shall be taken on grooves of driving and guiding drum not to be filled up with soil. Regularly clean the grooves when it occurs.

Follow the maintenance schedule.



3. Maintenance schedule

Description	Interval	
Grease elevator chain (prior to a longer shutdown)		
Grease all bearings fitted with grease nipples	yearly	

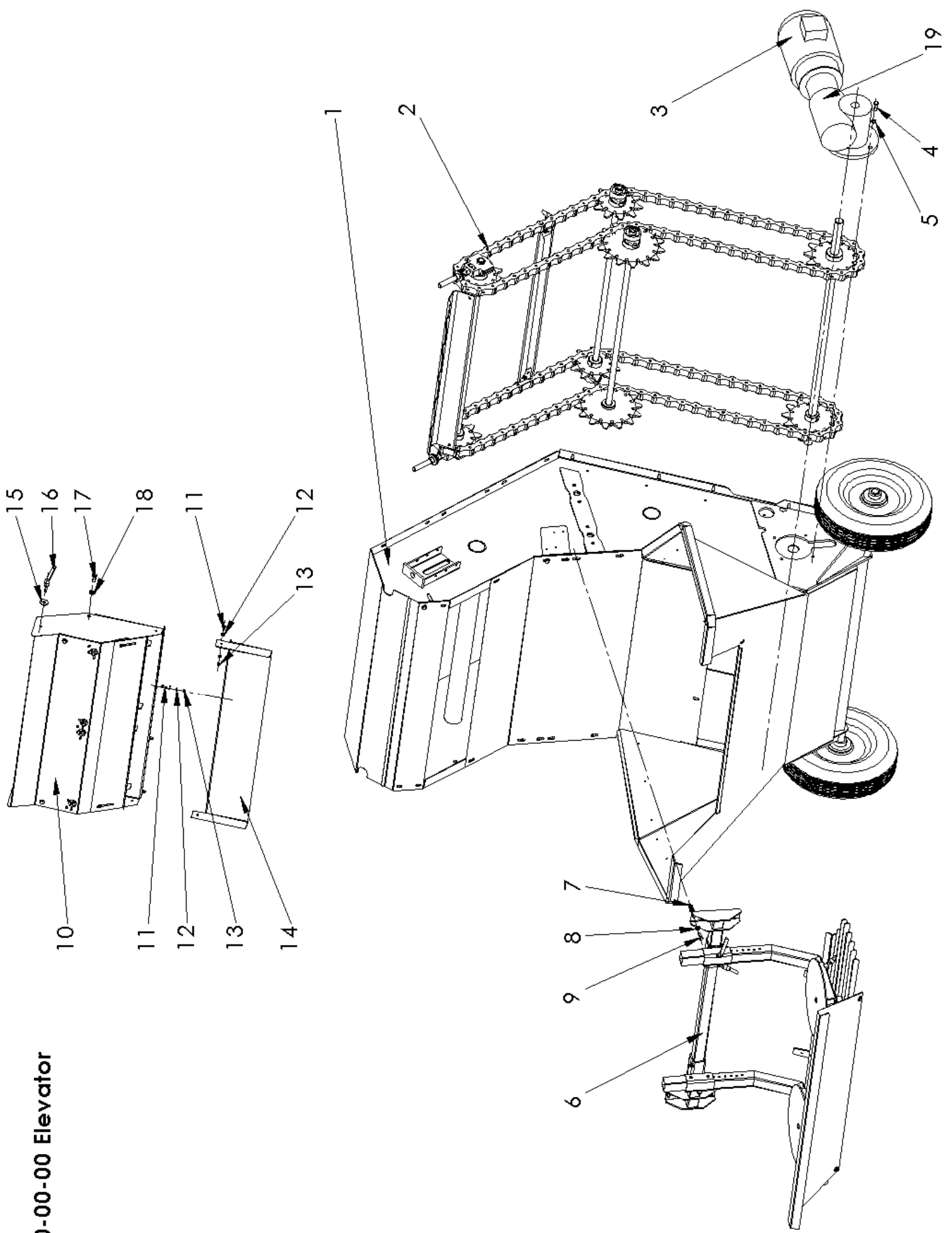
9 Part list

ELEVATOR 2018-A000-00-00
ELEVATOR

Pos.	Benennung Description	Artikelnummer Part number	Stück Amount
1	Elevator-Gehäuse Elevator housing	2018-A001-00-00	1
2	Elevator-Erdförderung ohne Getriebe Elevator soil conveyor without drive	2018-A031-00-00	1
3	Motor Motor	108 132/501 876	1
4	6-Kt-Schraube Hexagonal screw	101 669/500 183	8
5	Federring Spring ring	101 606 / 500 077	8
6	Topauflage Pot support	2018-A021-00-00	1
7	6-Kt-Mutter Hexagonal screw	101 688/500 222	4
8	U-Scheibe Washer	101 596/500 089	8
9	6-Kt-Schraube Hexagonal screw	101 768/500 169	4
10	Weiche Soil chute	2018-A011-00-00	1
11	6-Kt-Schraube Hexagonal screw	101 767/500 122	6
12	U-Scheibe Washer	101 595/500 088	12
13	6-Kt-Mutter Hexagonal screw	105 083/500 221	6
14	Adapter für Erdrutsche Adapter for soil chute	2018-Z-01-01	1
15	U-Scheibe Washer	101 617/500 350	2
16	Klemmhebel Clamping lever	501 537	2
17	6-Kt-Schraube Hexagonal screw	101 771/500 186	2

Pos.	Benennung Description	Artikelnummer Part number	Stück Amount
18	U-Scheibe Washer	101 597/500 090	2
19	Getriebe Drive unit	108 160/500 546	1

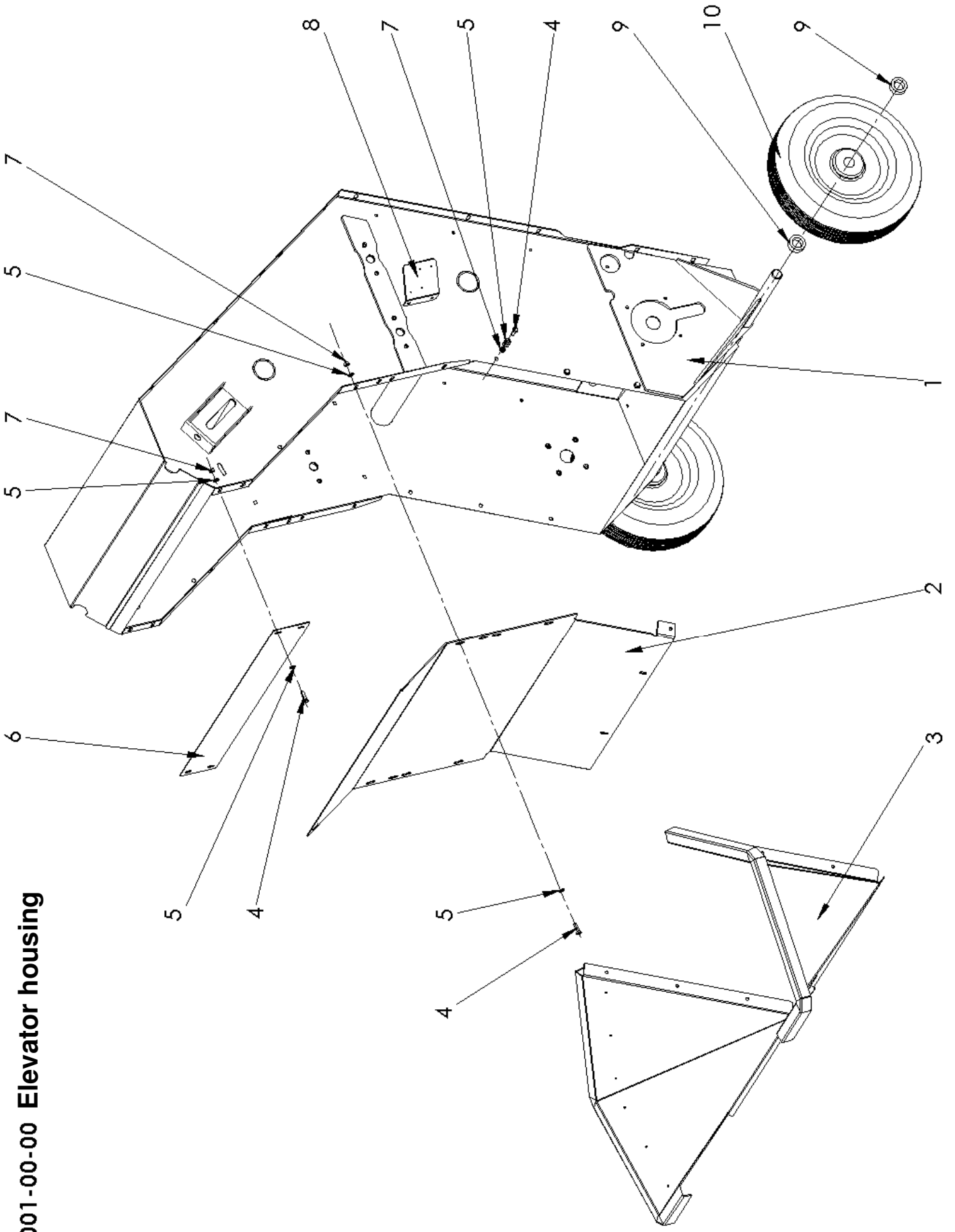
2018-A000-00-00 Elevator



Elevator-Gehäuse 2018-A001-00-00
Elevator housing

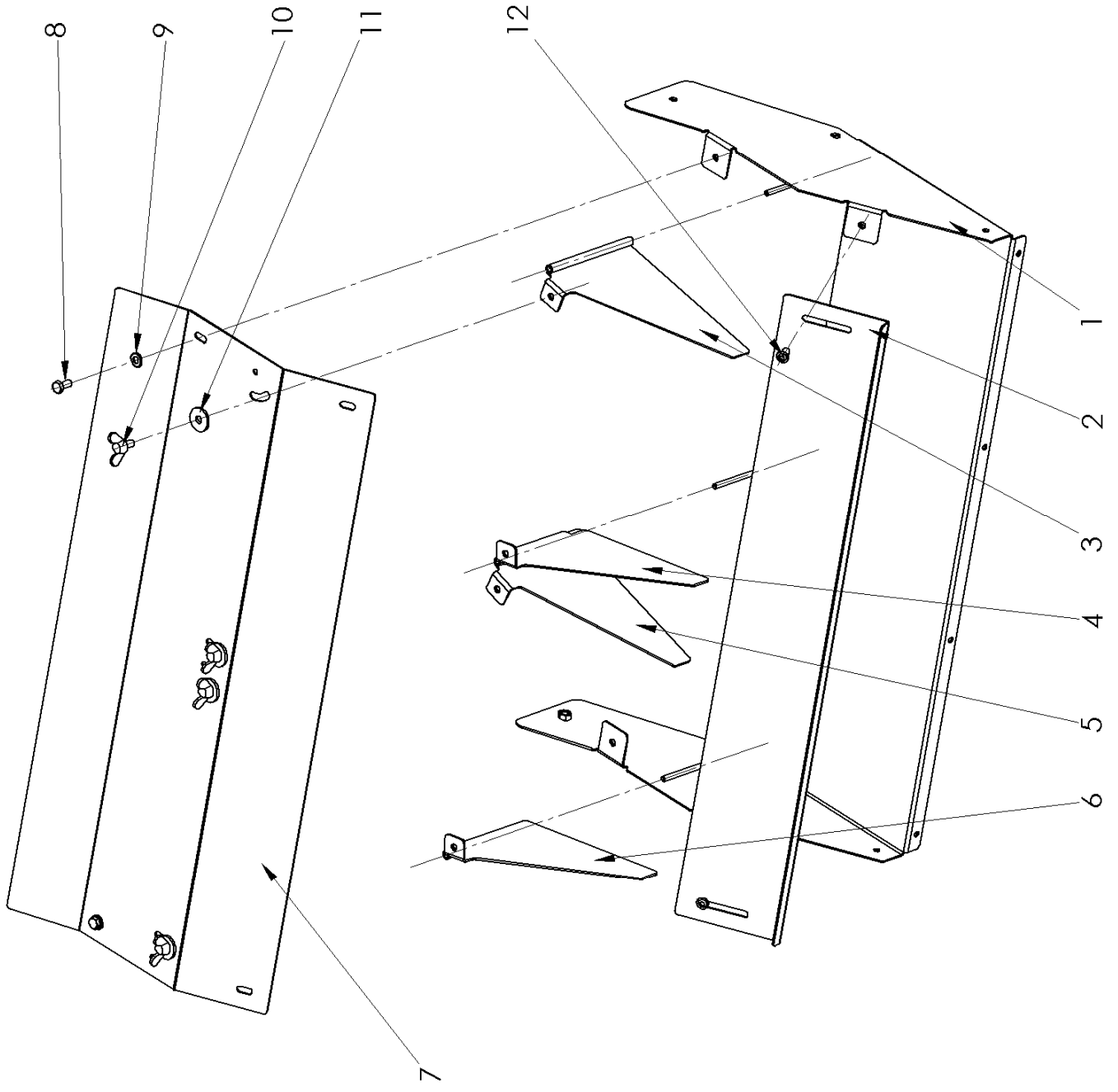
Pos.	Benennung Description	Artikelnummer Part number	Stück Amount
1	Gehäuse Housing	2018-A001-01-00	1
2	Erdblende Soil port	2018-A001-04-01	1
3	Blech Plate	2018-A001-02-00	1
4	6-Kt-Schraube Hexagonal screw	101 768 / 500 169	19
5	U-Scheibe Washer	101 596/500 089	38
6	Erdblende oben Upper soil port	2018-A001-17-01	1
7	6-Kt-Mutter Hexagonal nut	101 688 / 500 222	19
8	Schalterhalter Switch support	2018-A001-18-01	2
9	Stelling Set collar	101 544	4
10	Rad Wheel	102 563	2

2018-A001-00-00 Elevator housing



Weiche 2018-A011-00-00
Deflector

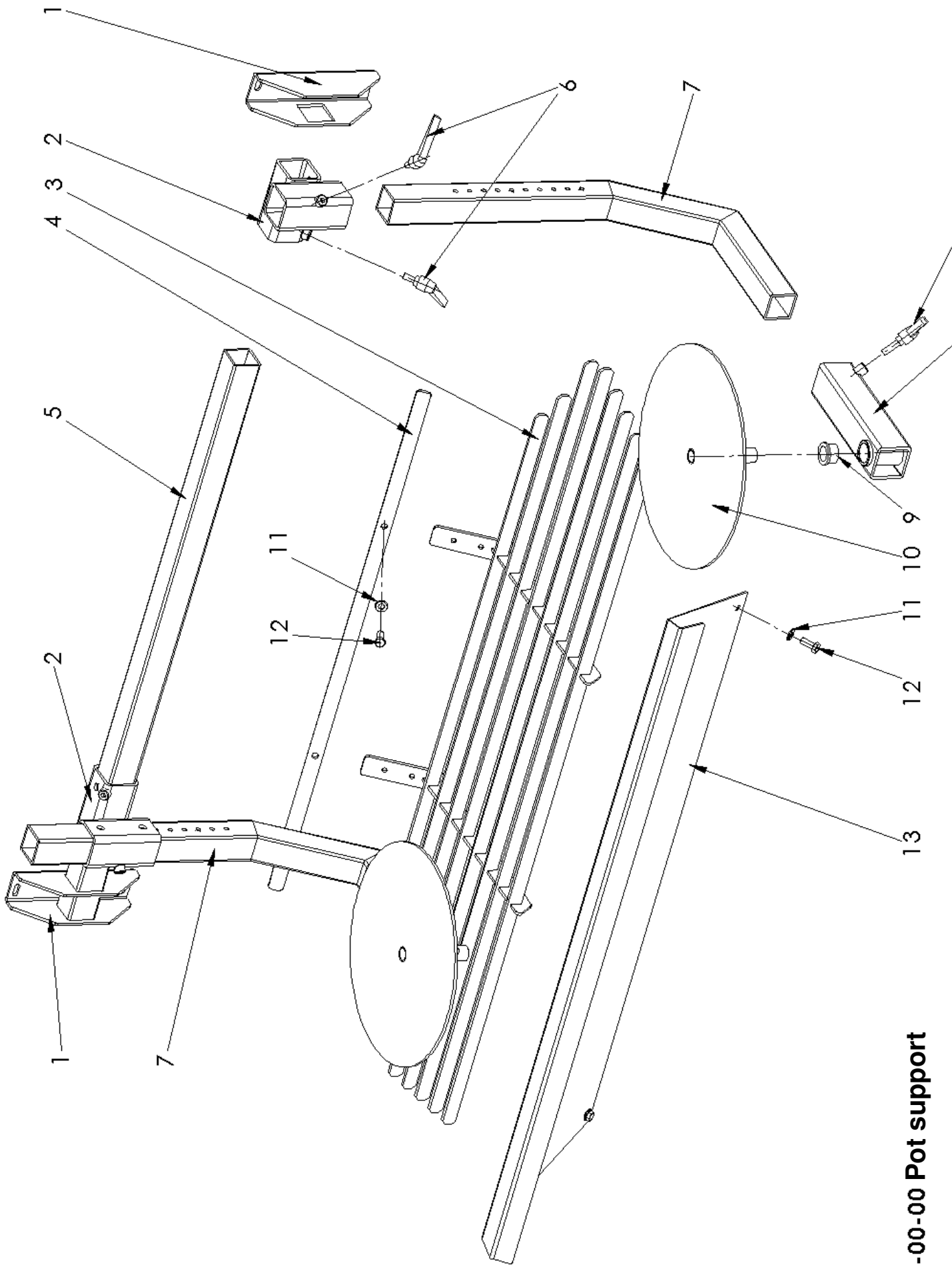
Pos.	Benennung Description	Artikelnummer Part number	Stück Amount
1	Erdrutsche Soil chute	2018-A011-01-00	1
2	Abnäher Constrictor	2018-A011-07-01	1
3	Weiche rechts Deflector right	2018-A011-02-00	1
4	Weiche mitte I. Deflector middle I.	2018-A011-04-00	1
5	Weiche mitte II. Deflector middle II.	2018-A011-05-00	1
6	Weiche links Deflector left	2018-A011-03-00	1
7	Abschlussblech Nab	2018-A011-06-01	1
8	6-Kt-Schraube Hexagonal screw	105 027/500 113	4
9	U-Scheibe Washer	101 596/500 089	4
10	Flügelschraube Butterfly nut	101 611/500 172	4
11	U-Scheibe Washer	101 617/500 350	4
12	Linsenflanschkopfschraube Lens headed plate screw	112 567/500 328	2



2018-A011-00-00 Deflector

Topfaulage 2018-A021-00-00
Pot support

Pos.	Benennung Description	Artikelnummer Part number	Stück Amount
1	U-Halter U-Holder	2018-A001-15-01	2
2	Träger Beam	2018-A001-06-00	2
3	Schutz Protecting	2018-A001-09-00	1
4	Flachstahl Flat-iron	2018-A001-22-01	1
5	Halter Holder	2018-A001-05-01	1
6	Klemmhebel Clamping lever	112 921/500 306	6
7	Haltewinkel Holder plate	2018-A001-07-00	2
8	Halter Holder	2018-A001-19-00	2
9	Buschse Bushing	BB345SINT	2
10	Topfaulage Pot support	2018-A001-08-00	2
11	U-Scheibe Washer	101 596/500 089	6
12	6-Kt-Schraube Hexagonal screw	109 878/500 112	6
13	Abschlussblech Nab	2018-A001-10-00	1



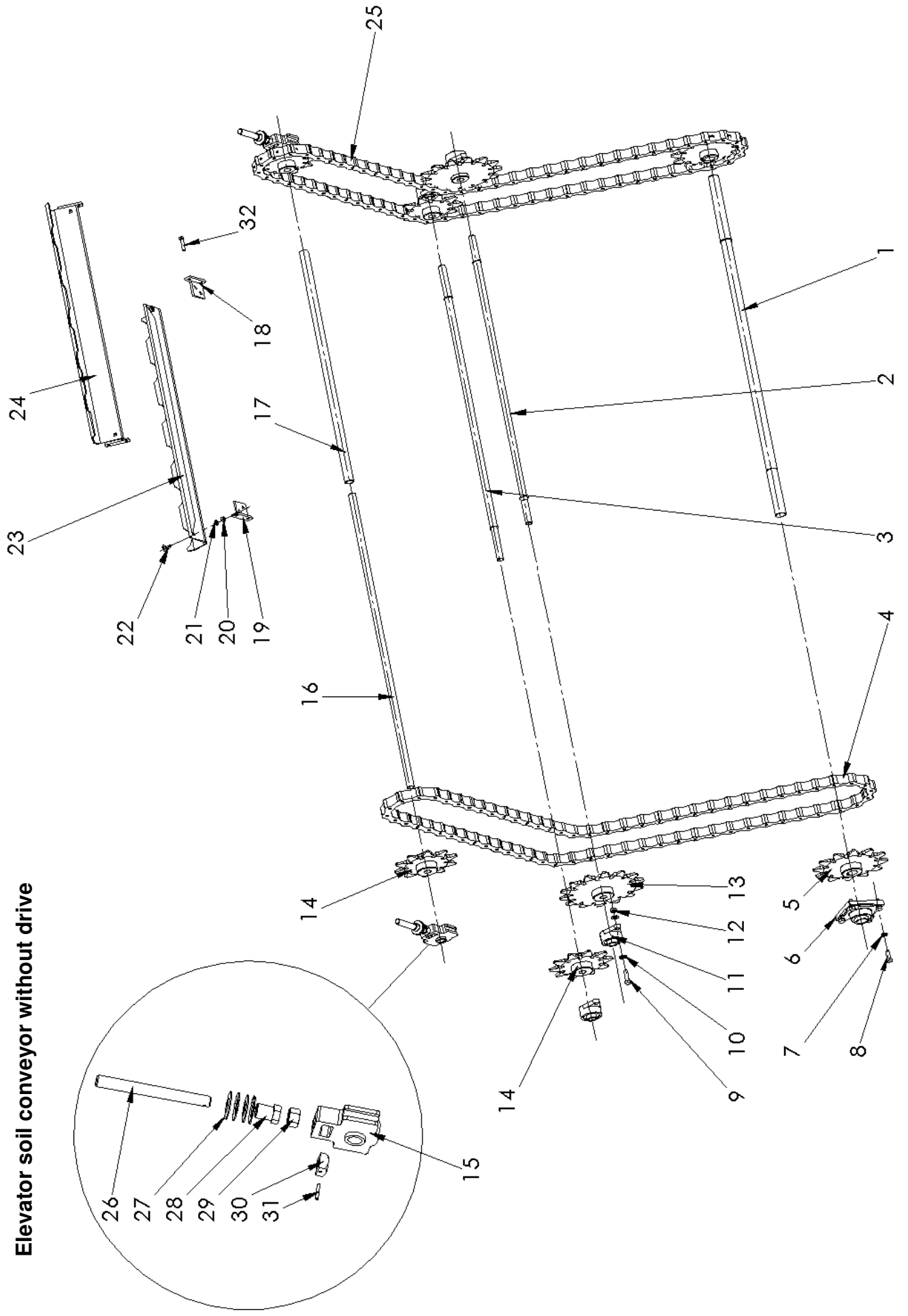
Elevator-Erdförderung ohne Getriebe 2018-A031-00-00
Elevator soil conveyor without drive

Pos.	Benennung Description	Artikelnummer Part number	Stück Amount
1	Antriebswelle Drive shaft	1010-01-03-01-00	1
2	Umlenkswelle Deflecting shaft	1010-01-03-15-00	1
3	Umlenkswelle Deflecting shaft	1010-01-03-12-00	1
4	Förderkette links Hollow bolt chain left	1012-01-03-20-00	1
5	Antriebsrad Driving pulley	1010-01-03-06-00	2
6	Flanschlager Flange bearing	102 182	1
7	Federring Spring ring	101 606 / 500 077	4
8	6-Kt-Schraube Hexagonal screw	101 771/500 186	4
9	6-Kt-Schraube Hexagonal screw	101 661/500 164	8
10	U-Scheibe Washer	101 597/500 090	16
11	Flanschlager Flange bearing	102 179/502 503	4
12	6-Kt-Mutter Hexagonal screw	105 079/500 223	8
13	Umlenkrad vorne Deflecting wheel	1010-01-03-16-00	2
14	Spann und Umlenkrad Tensioning, deflecting wheel	1010-01-03-11-00	4
15	Spannplattenlager Bearing,tensioning plate	102 180/502 500	2
16	Spannwelle Tensioning shaft	1010-01-03-10-00	1
17	Distanzrohr Distance piece	1010-01-03-17-00	1
18	Haltewinkel rechts Bracket right	1010-01-03-21-03	17

Pos.	Benennung Description	Artikelnummer Part number	Stück Amount
19	Haltewinkel links Bracket left	1010-01-03-20-03	17
20	6-Kt-Mutter Hexagonal nut	101 688 / 500 222	34
21	Federring Spring ring	101 605 / 500 076	34
22	Flachrundschraube Half-round head screw	101 687 / 500 066	34
23	Schaufel Shovel blade	1010-01-03-36-01	8
24	Schaufel Shovel blade	1010-01-03-35-01	9
25	Förderkette rechts Hollow bolt chain right	1012-01-03-21-00	1
26	Spindel Spindle	1010-01-03-09-02	2
27	Tellerfeder Belleville spring	101 888 / 500 214	8
28	Bundmutter Flange nut	1010-01-03-09-03	2
29	6-Kt-Mutter Hexagonal nut	107 536	2
30	4-Kt-Mutter Square nut	101 638 / 500 239	2
31	Spannhülse Clamping sleeve	101 617	2
32	6-Kt-Schraube Hexagonal screw	101 661/500 164	68

2018-A031-00-00

Elevator soil conveyor without drive



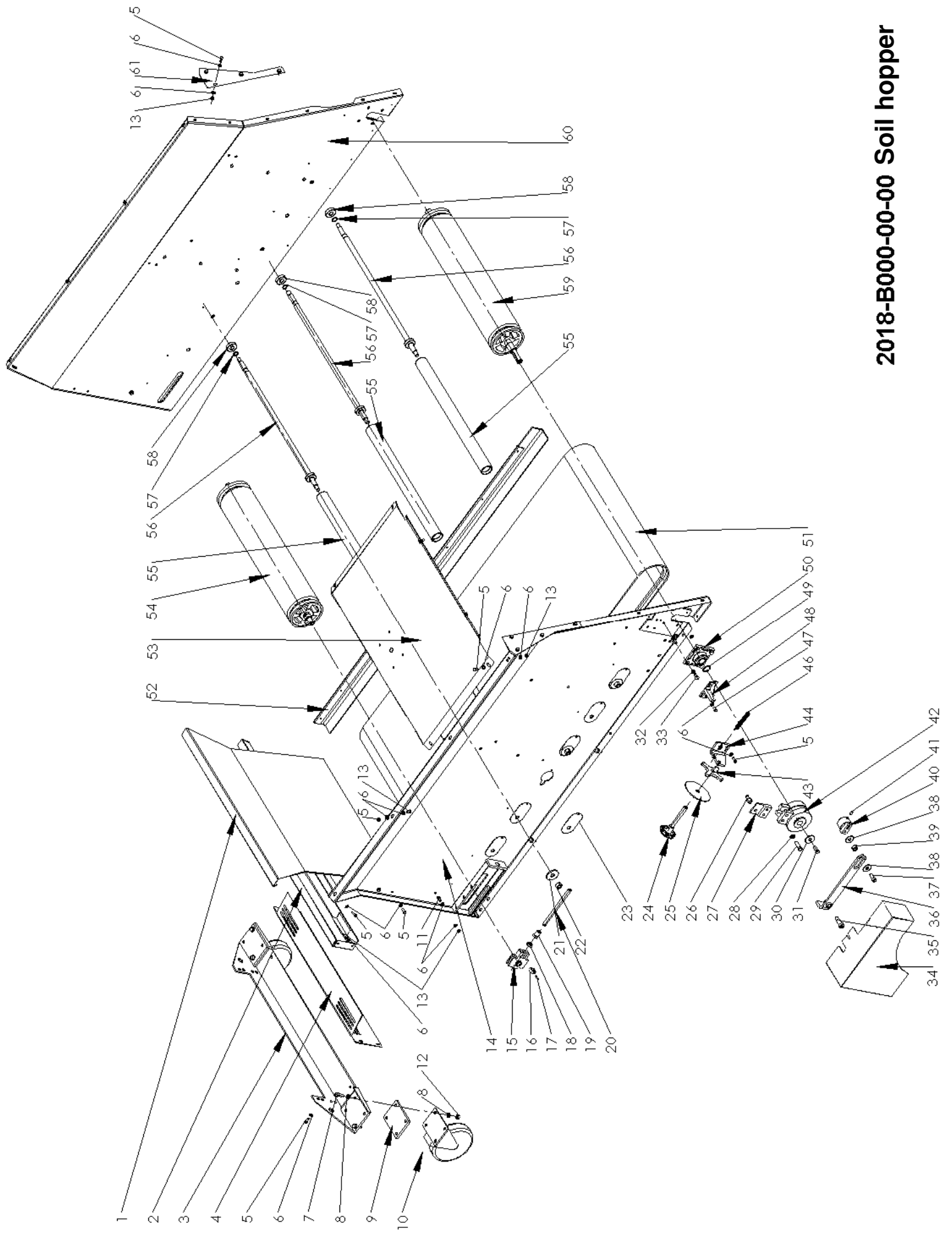
Erdbehälter 2018-B000-00-00
Soil hopper

Pos.	Benennung Description	Artikelnummer Part number	Stück Amount
1	Blech Plate	1010-B001-05-01	1
2	Handgriff Handhold	1010-B001-07-01	1
3	Konsole für Lenkrolle Console by wheel	1010-0299-832	1
4	Schutzblech Guard	1010-B001-08-01	1
5	6-Kt-Schraube Hexagonal screw	109 878 / 500 112	30
6	U-Scheiben Washer	101 596 / 500 089	60
7	6-Kt-Schraube Hexagonal screw	105 040 / 500 184	8
8	U-Scheiben Washer	101 597 / 500 090	16
9	Distanz Distance	2400-B007-01-02	2
10	Rad Wheel	503 131	2
11	Zylinder-Schraube Cylinder head screw	101 721 / 500 259	2
12	6-Kt-Mutter Hexagonal nut	105 079 / 500 223	8
13	6-Kt-Mutter Hexagonal nut	101 688 / 500 222	27
14	Seitenwand links Side wall left	1010-B001-01-00	1
15	Spannplattenlager Tensioning plate bearing	502 500	2
16	4-Kt-Mutter Square nut	101 638	2
17	Spannhülse Clamping sleeve	101 817 / 500 004	1

Pos.	Benennung Description	Artikelnummer Part number	Stück Amount
18	6-Kt-Mutter Hexagonal nut	101 614 / 500 226	2
19	Bundmutter Flange nut	1010-01-03-09-03	2
20	Spindel Spindle	1010-02-02-04-01	2
21	U-Scheibe Washer	101 620 / 500 351	6
22	6-Kt-Mutter Hexagonal nut	107 536 / 500 226	6
23	Schutzblech Guard	2400-B001-11-01	6
24	Spindel Spindle	1010-02-02-08-00	1
25	Scheibe Disk	1010-02-02-08-02	1
26	Federbolzen Spring bolt	1010-02-02-02-02	1
27	Lasche Connecting plate	1010-01-12-02-01	1
28	U-Scheibe Washer	101 598 / 500 080	2
29	6-Kt-Schraube Hexagonal screw	105 042 / 500 181	2
30	U-Scheibe Washer	101 619 / 500 348	1
31	6-Kt-Schraube Hexagonal screw	105 022 / 500 176	1
32	Federring Spring ring	101 606 / 500 077	8
33	6-Kt-Schraube Hexagonal screw	105 025 / 500 173	8
34	Schutz für Zugstange Protection	2018-A001-14-01	1
35	Paßschraube Fitting screw	101 873	1

Pos.	Benennung Description	Artikelnummer Part number	Stück Amount
36	Zugstange Connecting rod	2105-01-03-08-00	1
37	Zylinder-Schraube Cylinder head screw	101 737 / 500 276	1
38	Distanzscheibe Distance bracket disk	1010-01-03-03-03	1
39	Zylinderrollenlager Cyindrical roller bearing	102 201 / 500 325	1
40	Exzenter Eccentric Collar	1010-01-03-07-00	1
41	Gewindestift Threaded pin	101 748 / 500 030	1
42	Freilauf Free wheel hub	105 425	1
43	Kreuzgriff Cross handle	1010-02-02-08-03	1
44	Winkel Cornel	1010-B051-01-01	1
45	Augenschraube Eye screw	503 992	1
46	Zugfeder Tension spring	1010-01-03-05-00	1
47	6-Kt-Schraube Hexagonal screw	105 027 / 500 113	6
48	Träger Bearn	1010-B051-03-00	1
49	Sicherungsring für Welle Retaining ring	101 624 / 500 865	1
50	Flanschlager Flange bearing	102 182	1
51	Gummiband Rubber band	102 267	1
52	Schutzleiste Protective plate	1010-02-02-07-00	1
53	Kettenschutz Guard	1010-B031-01-00	1
54	Umlenkrolle Guide roller	1010-02-02-03-00	1

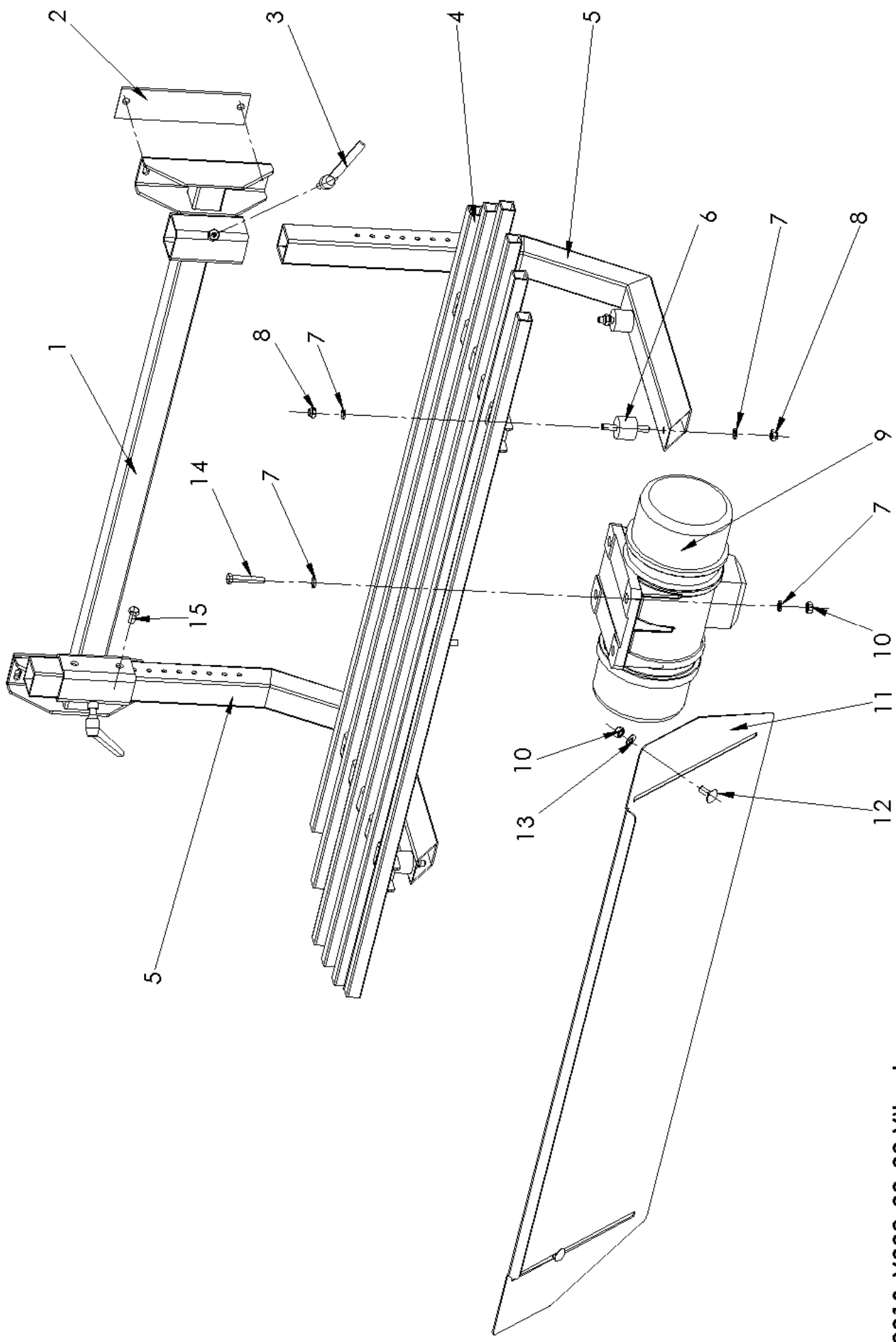
Pos.	Benennung Description	Artikelnummer Part number	Stück Amount
55	Rolle Roller	1010-02-02-05-01	3
56	Achse Axle	1010-02-02-05-02	3
57	Sicherungsring für Welle Retaining ring	101 623 / 500 897	6
58	Rillenkugellager Ball bearing	102 194 / 500 338	6
59	Antriebsrolle Driving roller	1010-02-02-01-00	1
60	Seitenwand rechts Side wall right	1010-B001-02-00	1
61	Eckblech Corner plate	1010-B021-01-01	2



2018-B000-00-00 Soil hopper

Vibrator 2018-V002-00-00
Vibrator

Pos.	Benennung Description	Artikelnummer Part number	Stück Amount
1	Halter Holder	2018-V002-04-00	1
2	Gummi Rubber	2018-V002-03-01	2
3	Klemmhebel Clamping lever	112 921/500 306	2
4	Gitter Grate	2018-V002-01-00	1
5	Haltewinkel Bracket	2018-V002-02-00	2
6	Gummi feder Rubber spring	505 113	4
7	Federring Spring ring	101 605 / 500 076	16
8	Selbsts. mutter Self locking nut	102 972/500 232	8
9	Vibromotor Vibrant motor	505 132	1
10	6-Kt-Mutter Hexagonal nut	101 688 / 500 222	6
11	Blech Plate	2018-V002-05-01	1
12	Flachrundschraube Half-round head screw	101 686/ 500 108	2
13	U-Scheibe Washer	101 596/500 089	2
14	6-Kt-Schraube Hexagonal screw	101 663/502 485	4
15	6-Kt-Schraube Hexagonal screw	105 027/500 113	2



10 Circuit diagrams for electric and pneumatic system

11 Guarantee

Horticultural machinery and special machinery

We will accept liability for faults in the supplied goods and for any failure to provide features for the existence of which an express assurance had been given. In such a case we undertake – to the exclusion of all further claims – to improve or re-supply (at our discretion) free of charge any parts which have revealed themselves to be unserviceable or subject to a not inconsiderable impairment in serviceability due to faults in their material, manufacturing process or design within twelve months (or within six months for multi-shift operation) of their arrival on the customer's premises. For parts which we do not manufacture ourselves (e.g. motors), we can only accept liability for the same scope and length of time which the subcontractor has accorded to us.

Any replaced parts shall become our own property. No warranty claims can be accepted if the fault occurs as a result of the customer having mistreated or neglected the products delivered by us, made modifications or undertaken repairs incorrectly or without our prior approval, or had third parties undertake such work.

The customer's entitlement to assert claims due to faults shall in all cases lapse six months following a complaint made within the required time period, however no sooner than the end of the compulsory warranty period. We are not responsible for correcting faults unless the customer has fulfilled its obligations due to us up to the point when the fault became apparent.

Changes in the design and shape of horticultural machinery and equipment

We reserve the right to make changes in design and shape, in particular with regard to deviations from the drawings and descriptions etc. during the delivery period, provided that the purchased object is not thereby significantly altered, rendered less effective or reduced in value and the customer can reasonably be expected to accept the modifications.

You have chosen to purchase a product of true quality.

We wish you every success with your product.

We would be most grateful if you would recommend our products to others.

Thank you

Your MAYER-TEAM

